

Virusee[®]

COVID-19 IgM/IgG Lateral Flow Assay

**One drop of blood
10 minutes get the reliable result**



Overview

Novel Coronavirus causes acute pneumonia and is easily transmitted person to person and person to infected objects. After emerging, more patients with Novel Coronavirus Pneumonia (NCP) has been successively discovered all over china and even the world in a short time. At present, the global cumulative number of proved cases has reached nearly 100,000 cases, and the global cumulative death has reached 3,000 cases, patients with NCP are distributed in more than 30 countries and regions, and still increasing rapidly. Nowadays, the diagnosis method widely used in clinical is real-time PCR. However, nucleic acid detection often gives false negative results due to sampling methods, virus titers, etc.

An accurate and rapid detection is crucial in weathering the NCP.

Epidemiology

Source of infection: The novel coronavirus infected patients, **asymptomatic patients can also be a source of infection**

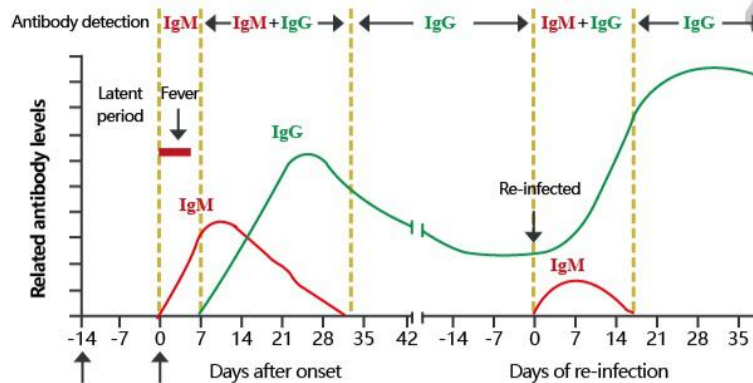
Transmission: Respiratory droplets and Close contact transmission (Main) ,
Aerosol transmission

Susceptible population: Generally susceptible

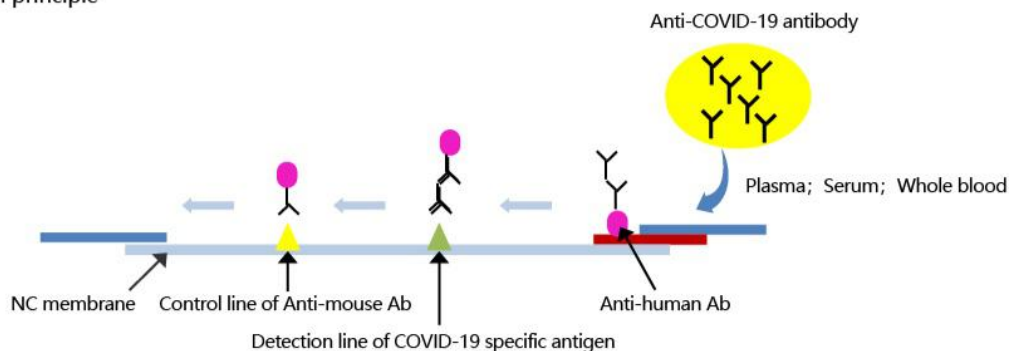
Novel Coronavirus is more contagious than SARS-CoV and MERS-CoV
Generally Susceptible
Screening Tests are Acutely Needed

Experimental Principle

Relationship between antibody concentration and viral infection stage



Detection principle

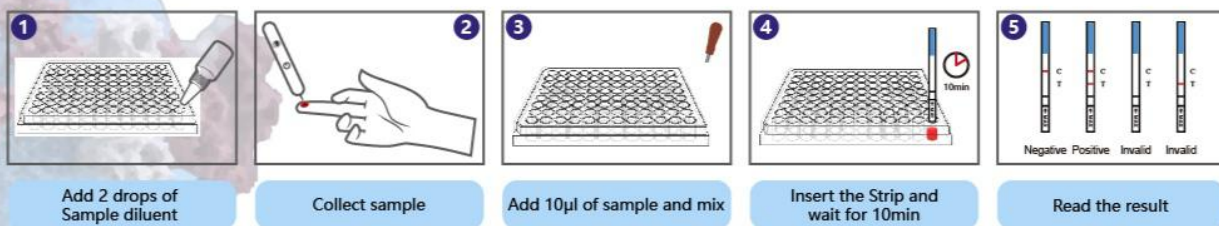


Product Characteristics

Basic Parameters	COVID-19 IgG Lateral Flow Assay	COVID-19 IgM Lateral Flow Assay
Method	Lateral Flow Assay	
Specification	40 tests/kit	
Sample type	Whole blood / Serum / Plasma	
Sample volume	10 µl	
Detection time	10 min	
Detection objects	Novel Coronavirus	
Stability	The K-Set is stable for 2 years at 2°C-30°C	
Sensitivity	96.00%	94.67%
Specificity	96.00%	96.80%

Operation Method

Strip type (40 Tests/Kit)



Product Advantages

Point-Of-Care Testing

- ★ **Rapid:** Obtain result within 10 min
- ★ **Simple:** Easy to use, only need one drop of blood
- ★ **Intuitive result:** There is no need for calculation and instrument, visual reading result
- ★ **Economic:** Product can be transported and stored at room temperature, reducing costs
- ★ **Low risk:** Testing blood sample, reducing the risk of sampling process

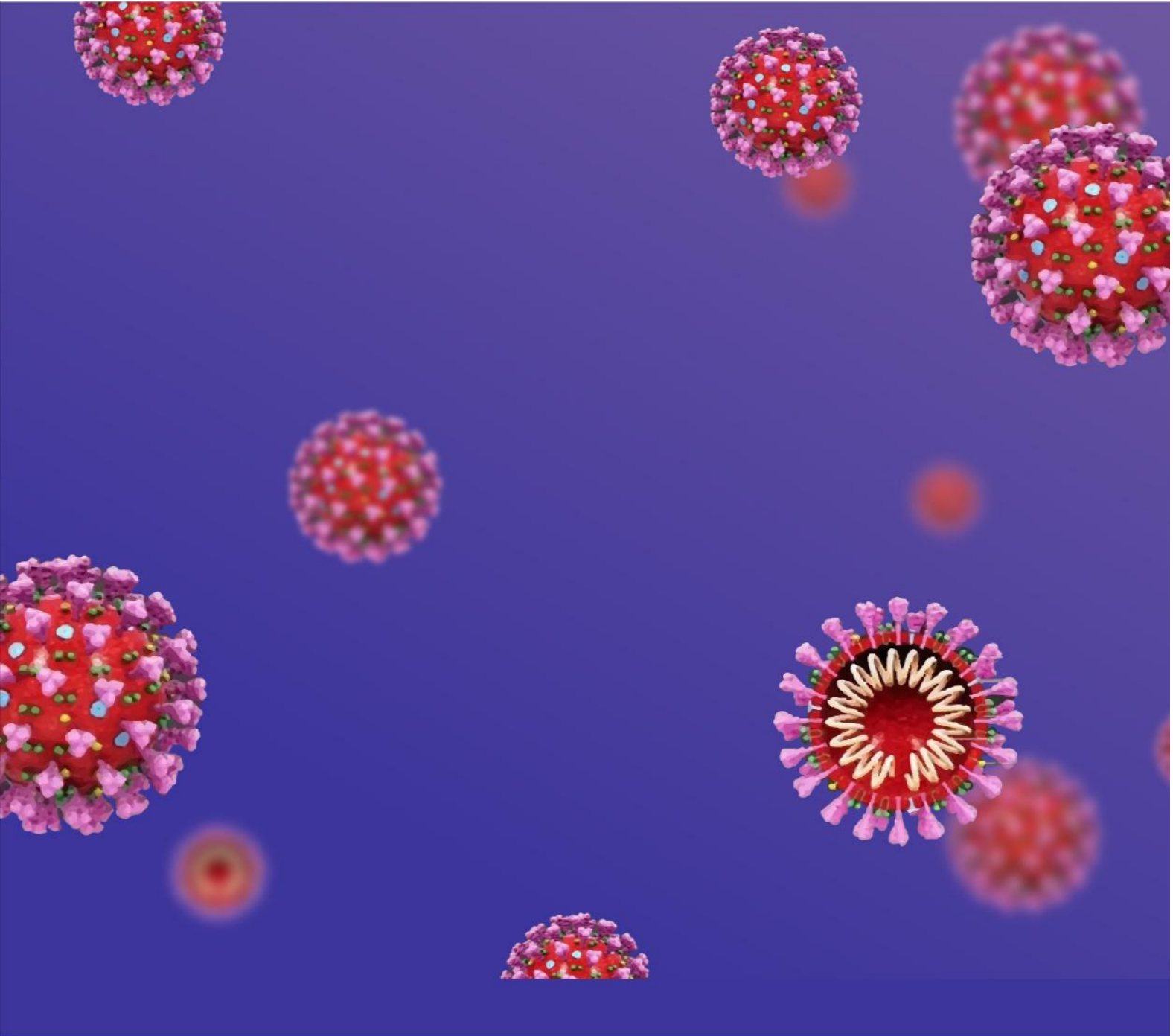
Suitable for screening on-site, bedside, outpatient

Reference

1. National Health Commission of the People's Republic of China. The diagnosis and treatment suggestion of novel coronavirus pneumonia [online].

Available at: <http://www.nhc.gov.cn/yzygj/s7653p/202002/8334a8326dd94d329df351d7da8aefc2.shtml>

[Accessed 19 February 2020]



Tel: +86(22)60978609 ext. 8603/8606/8608/8609

Fax: +86(22)60978609-804

E-mail: marketing@era-bio.com / customer@era-bio.com

Web: www.era-bio.com



 **Genobio Pharmaceutical Co., Ltd.**

Add: 2-1,2,3-101, No.2 Zone, Binlv Industrial Park, Binhai
Tourism Area, Binhai New Area, Tianjin 300480, P. R. China

 **Tianjin Era Biology Technology Co., Ltd.**

Add: 1601, Building C2, TEDA MSD-C, No. 79, 1st Avenue, Tianjin
Economic-Technological Development Area, Tianjin 300457,
P. R. China

Genobio is wholly-owned subsidiary of Era Biology Group